

# Visualization Principles & Practice Assignment

## NHS Data Visualization

Matthew Dyson

### Program Usage

My visualization of the given data is displayed as 3 separate 3D bar-charts with interactive capabilities to create a more immersive user experience. These are launched from a central dashboard which opens when the program is first run. Clicking on one of the three reports will launch the user into the viewing window, from which they can examine the chart.

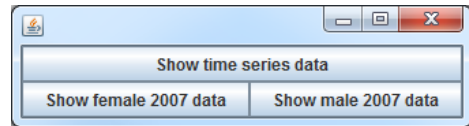


Figure 1: Dashboard

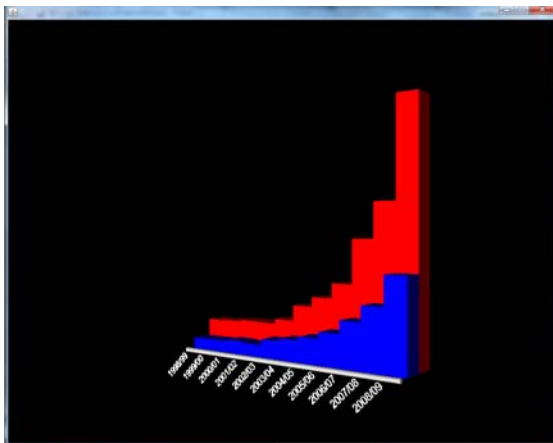


Figure 2: Bar chart of time series data

Within the chart viewing window, the user can rotate the 3D chart to view from different angles by dragging the mouse whilst the left button is depressed. The viewing point can be changed in a similar manner, by holding down the right mouse button and dragging. The viewpoint can be zoomed in and out by scrolling the mouse wheel. These features allow the user to view the data from any angle they wish, giving them the ability to interpret the data displayed a lot more easily than with static viewpoints.

Clicking on one of the bars will display the appropriate label on the left of the chart, along with the value of the selected bar.

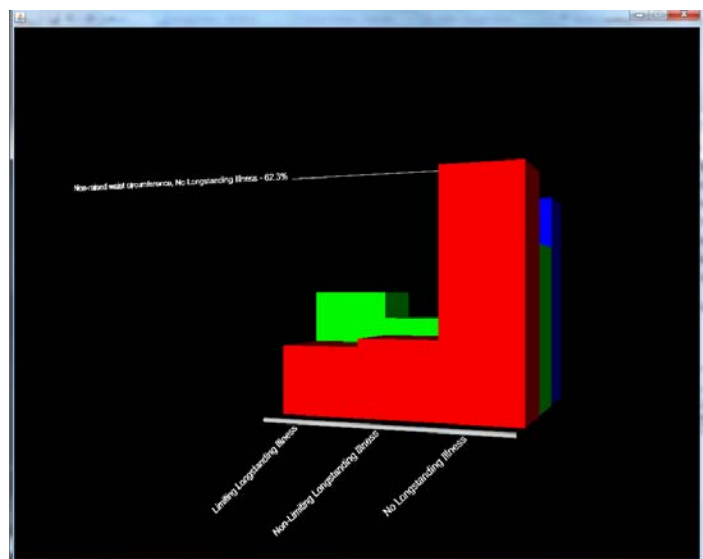


Figure 3: Bar chart showing selected bar